

# Energy UNO

## LED Väg-/Områdesarmatur

Enkel installation, förlängd livslängd och optimal systemhantering var riktlinjerna vid utformningen av Energy serien. Designat som ett komplett gatubelysningsystem optimerat för LED ljuskällor kännetecknas av dess extraordinära effektivitet. Energy serien är tack vare sin modulära design den bästa belysningslösningen i varje given situation. Cree Energy ger den främsta och mest flexibla belysningslösningen tack vare den modulära uppbyggnaden som består av tre armaturstorlekar, fyra lumenpaket per storlek, en komplett uppsättning av optiska möjligheter, och ett brett utbud av olika ljuskällor (färgtemperaturer). Armaturserien har också ett fullt utvecklat utbud av olika sätt att reglera ljusflödet tillsammans med full Zhaga anslutning.

Tack vare det justerbara fästet kan armaturen monteras på stolptopp, arm eller väggfäste med en diameter på 60mm (Ø48mm används adapter), och justerbar 90°, i steg om 5°. Justering av armaturvinkel görs från utsidan av armaturen utan att behöva öppna locket.

**Användningsområde:** Stads- och lokalgator, gångvägar och parkeringsplatser



### Kortfakta

**Effektivitet:** upp till 160lm/W

**Initialt ljusflöde:** upp till 8600lm

**Färgkonstens:** 4SDM

**Begränsad garanti:** 5 år (armaturen)



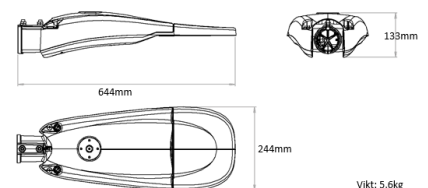
### Beställningsinformation

Eg: TRSA-2-075-2L-228-+-A-SG-FX-S-S-00+ FXA10HA0-00001

TRSA	- 2	- 075	- A	- 228	- +	- A	- SG	- FX	- S	- S	- 00
Serie	Fäste	Optik	Ljus-paket	CCT	Class	Spänning	Färg	Optioner	Variant	Skydd	Kabel
TRSA	2 horiz/vert tenon 60mm	075 Narrow Street 0.75 (T2S)	2L Up to 2100lm	228* 2200K CRI80	+ Class 1	A 220-240V	SG Sapphire Gray	FX Fixed Output (setting on request)	S Standard	S Standard 6 kV	00 Standard no cable
	3 horiz/vert tenon 76mm	100 Medium Street 1.00 (T2S)	4L Up to 4300lm	278 2700K CRI80	^ Class 2		BK* Black Textured	VM Virtual Midnight	N* Nema Socket 7 pin	SF 6 kV SPD+Fuse	01 Exit Cable 1 m
		125 Comfort Street 1.25 (T2S)	6L Up to 6500lm	308 3000K CRI80			WH* White Textured	DL DALI		U 10 kV SPD	03 Exit Cable 3 m
		SCP Street & Cycle Path class P (T2S)	8L Up to 8600lm	407 4000K CRI70				CL Constant Lumen		UF 10 kV SPD+Fuse	06 Exit Cable 6 m
				577* 5700K CRI70				VMC Virtual Midnight+ Constant Lumen	Z Zhaga Socket/ D4i driver		10 Exit Cable 10 m
								RF D4i Regulator			
								G Lineswitch			

#### ADAPTER

KIT-TRS-LS-42/48-V0 Fitter kit to mount to 42 & 48 mm tenon



# Energy UNO

## LED Väg-/Områdesarmatur

### FUNKTIONER

- Full cut-off optik och LED PCB kompatibelt med Zhaga Book 15
- LED ljusflöde upp till 8600lm
- Zhaga Book 15 kompatibel LED modul effektivitet (exkl optiskt system):  $\geq 185$  lm/W
- Effektivitet armatur (inkl optiska förluster): upp till 160 lm/W
- CCT: 2200K\*, 2700K, 3000K @Ra80 och 4000K, 5700K@ Ra70 (\*På begäran MOQ)
- CRI Standard min. 70, CRI80 @3000K
- Initial SDCM:  $\leq 4$ -Step MacAdam ellipse eller  $\Delta u'v' \leq 0.003$  (LM80:08)
- SDCM @ 6.000 timmar:  $\leq 7$ -Step MacAdam ellipse eller  $\Delta u'v' \leq 0.007$  (LM80:08)
- Bibehållningsfaktor ljusflöde (LMF): L978B101 upp till 100 000 timmar  $T_a=25^\circ\text{C}$  (Enligt IESNA TM-21)
- IP klass optik och elektronikhus: IP66 (IEC 60529)
- IK klass optik och elektronikhus:  $\geq \text{IK10}$  (EN 62262)
- Överspänningsskydd: upp till 10kV CM/DM enligt EN61000-4-5 och EN 61547
- Driver utrustad med överhettningsskydd för optimal prestanda och säkerhet.
- Omgivningstemperatur ( $T_a$ ):  $-40^\circ\text{C}$  upp till  $+50^\circ\text{C}$
- Kontroll optioner: Virtual Midnight, DALI 2, Constant Flow, Flow Regulator, Lineswitch, D4i
- Tillgänglig med Zhaga Book 18 kontakt

### KONSTRUKTION OCH MATERIAL

- Armaturhus av gjutet aluminium med låg kopparhalt
- Drivdonsutrymme åtkomligt utan verktyg
- Demonterbar inkopplingsplatta
- Knivkontakt
- 4mm genomskinligt planglas
- Utbytbara PMMA linser
- Utbytbar LED modul med ESD skydd
- Kabel typ H07RN-F (Förmonterad kabel upp till 10m)
- Enkel installation: armaturen behöver inte öppnas när version med förmonterad kabel väljs,
- Enkelhet vid både vanligt och extraordinärt underhåll: montageplatta för drivdon utbytbar utan verktyg; linser och LED modul enkelt att byta med ett och samma verktyg
- Armaturen sammansatt helt utan användande av lim, alla delar demonterbara och återvinningsbara

### GARANTI OCH CERTIFIKAT

- Garanti: 5 år
- CE /CB /ENEC /RoHS
- Riskgrupp undantagen i enlighet med standard CEI EN 62471 för fotobiologisk säkerhet (Tested IEC/TR62778)
- Kompatibel med: EN 60598-1; EN 60598-2-3
- Blyfri pulverlack med utmärkt hållbarhet för användning utomhus
- Vidhäftnings test - följer ISO 2409
- Salt spray test - NSS följer ISO 9227
- Vittringstest (accelererad) - UV följer ISO 16474-2(ex ISO 11507)
- Luftfuktighetstest - följer ISO 6270-1

### ELEKTRISK DATA\*

Lumen paket	Systemeffekt, max (W) 220-240V	Total ström	Powerfaktor
		@230V, 50Hz	
2L	15W	0,07	0,94
4L	28W	0,125	0,97
6L	41W	0,181	0,98
8L	54W	0,238	0,98

\*vid 25°C

### LMF 075, 100 & 125-OPTIK – REKOMENDERAD BIBEHÅLLNINGSAKTOR (LMF)<sup>1</sup>

Ambient	LMF iniziale	25K hr Projected <sup>2</sup> LMF	50K hr Projected <sup>2</sup> LMF	75K hr Calculated <sup>3</sup> LMF	100K hr Calculated <sup>3</sup> LMF
25°C	1	0,97	0,94	0,92	0,90

### LMF SCP-OPTIK – REKOMENDERAD BIBEHÅLLNINGSAKTOR (LMF)<sup>1</sup>

Omgivning °C	LMF initial	25K hr Projected <sup>2</sup> LMF	50K hr Projected <sup>2</sup> LMF	75K hr Calculated <sup>3</sup> LMF	100K hr Calculated <sup>3</sup> LMF
25°C	1	0,99	0,98	0,98	0,97

<sup>1</sup> Underhållsvärden för ljusflöde beräknat vid 25°C, med TM-21 baserat på LM-80 data och på-platsen tester.

<sup>2</sup> I enlighet med IESNA TM-21-11, är värdena som visas i "Projected" kolumnen representerar interpolerade sex gånger (6X) total varaktighet i timmar av testerna (utförda enligt IESNA LM-80-08) som enheten har utsatts för ((DUT) t.ex. LED-chip).

<sup>3</sup> I enlighet med IESNA TM-21-11, är värdena som visas i "Projected" kolumnen representerar interpolerade mer än sex gånger (6X) total varaktighet i timmar av testerna (utförda enligt IESNA LM-80-08) som enheten har utsatts för ((DUT) t.ex. LED-chip).

### TILLGÄNGLIGA ALTERNATIV MED NEMA

FX-N	NEMA 7-pin kombinerad med fast effekt (FX)	(av-på)
VM-N	NEMA 7-pin kombinerad med midnattssänkning (VM)	(av-på)
DL-N	NEMA 7-pin ansluten till DALI 2.0 driver	(av-på + Dim)
CL-N	NEMA 7-pin kombinerad konstant ljusflöde (CLO)	(av-på)
VMC-N	NEMA 7-pin kombinerad med VM+CLO	(av-på)

av-på: NEMA möjliggör bara av-på av amaturen

av-på + Dim: NEMA möjliggör av-på och dimring av amaturen

### TILLGÄNGLIGA ALTERNATIV MED ZHAGA

FX-Z	Zhaga Book 18 kontakt & D4i driver kombinerad med fast effekt (FX)
VM-Z	Zhaga Book 18 kontakt & D4i driver kombinerad med midnattssänkning (VM)
CL-Z	Zhaga Book 18 kontakt & D4i driver kombinerad konstant ljusflöde (CLO)
VMC-Z	Zhaga Book 18 kontakt & D4i driver kombinerad med VM+CLO



## Control options - Variant S - N(Optics 075 - 100 - 125)

FX - FIXED OUTPUT					
Setting Code	System Watts W	Nominal flux (lm)			Description
		2700K	3000K	4000K	
<b>LUMEN PACKAGE 8L</b>					
FXA10HA0-00001	54	6872	7782	8640	FIXED OUTPUT 54W
FXA10HA0-00002	36	4847	5489	6094	FIXED OUTPUT 36W
FXA10HA0-00003	27	3729	4223	4689	FIXED OUTPUT 27W
<b>LUMEN PACKAGE 6L</b>					
FXA10FA0-00001	41	5220	5220	6562	FIXED OUTPUT 41W
FXA10FA0-00002	27	3682	3682	4629	FIXED OUTPUT 27W
FXA10FA0-00003	21	2833	2833	3561	FIXED OUTPUT 21W
<b>LUMEN PACKAGE 4L</b>					
FXA10DA0-00001	28	3429	3883	4311	FIXED OUTPUT 28W
FXA10DA0-00002	19	2419	2739	3041	FIXED OUTPUT 19W
FXA10DA0-00003	14	1861	2107	2340	FIXED OUTPUT 14W
<b>LUMEN PACKAGE 2L</b>					
FXA10BA0-00001	15	1694	1918	2130	FIXED OUTPUT 15W
FXA10BA0-00002	10	1195	1353	1502	FIXED OUTPUT 10W
FXA10BA0-00003	8	919	1041	1156	FIXED OUTPUT 8W

VM - VIRTUAL MIDNIGHT (Lumen package 8L - 6L)													
Setting Code	W Max	Nominal flux (lm)			W Med	Nominal flux (lm)			W Min	Nominal flux (lm)			Description
		2700K	3000K	4000K		2700K	3000K	4000K		2700K	3000K	4000K	
<b>LUMEN PACKAGE 8L</b>													
VMA10HA0-0013	54	6872	7782	8640	36	4847	5178	6094	27	3729	4223	4689	VM ON-54W / 21:00-36W / 24:00-27W / 04:00-36W/06:00-54W
VMA10HA0-0014	36	4847	5489	6094	24	3363	3592	4228	19	2543	2879	3197	VM ON-36W / 21:00-24W / 24:00-19W /04:00-24W/06:00- 36W
VMA10HA0-0015	27	3729	4223	4689	19	2543	2716	3197	15	1947	2205	2448	VM ON-27W / 21:00-19W / 24:00-15W / 04:00-19W/06:00-27W
VMA10HA0-0001	54	6872	7782	8640					27	3729	4223	4689	VM ON-54W / 22:00-27W / 06:00-54W
VMA10HA0-0002	54	6872	7782	8640					36	4847	5489	6094	VM ON-54W / 22:00-36W / 06:00-54W
VMA10HA0-0003	36	4847	5489	6094					19	2543	2879	3197	VM ON-36W / 22:00-19W / 06:00-36W
VMA10HA0-0004	36	4847	5489	6094					24	3363	3808	4228	VM ON-36W / 22:00-24W / 06:00-36W
VMA10HA0-0005	27	3729	4223	4689					15	1947	2205	2448	VM ON-27W / 22:00-15W / 06:00-27W
VMA10HA0-0006	27	3729	4223	4689					19	2543	2879	3197	VM ON-27W / 22:00-19W / 06:00-27W
VMA10HA0-0007	54	6872	7782	8640					27	3729	4223	4689	VM ON-54W / 00:00-27W / 06:00-54W
VMA10HA0-0008	54	6872	7782	8640					36	4847	5489	6094	VM ON-54W / 00:00-36W / 06:00-54W
VMA10HA0-0009	36	4847	5489	6094					19	2543	2879	3197	VM ON-36W / 00:00-19W / 06:00-36W
VMA10HA0-0010	36	4847	5489	6094					24	3363	3808	4228	VM ON-36W / 00:00-24W / 06:00-36W
VMA10HA0-0011	27	3729	4223	4689					15	1947	2205	2448	VM ON-27W / 00:00-15W / 06:00-27W
VMA10HA0-0012	27	3729	4223	4689					19	2543	2879	3197	VM ON-27W / 00:00-19W / 06:00-27W
<b>LUMEN PACKAGE 6L</b>													
VMA10FA0-0013	41	5220	5220	6562					21	2833	2833	3561	VM ON-41W / 21:00-27W / 24:00-21W /04:00-27W/06:00- 41W
VMA10FA0-0014	27	3682	3682	4629	27	3682	3933	4629	14	1931	1931	2428	VM ON-27W / 21:00-19W / 24:00-14W /04:00-19W/06:00-27W
VMA10FA0-0015	21	2833	2833	3561	19	2554	2728	3211	11	1479	1479	1859	VM ON-21W / 21:00-14W / 24:00-11W /04:00-14W/06:00-21W
VMA10FA0-0001	41	5220	5220	6562	14	1931	2063	2428	21	2833	2833	3561	VM ON-41W / 22:00-21W / 06:00-41W
VMA10FA0-0002	41	5220	5220	6562					27	3682	3682	4629	VM ON-41W / 22:00-27W / 06:00-41W
VMA10FA0-0003	27	3682	3682	4629					14	1931	1931	2428	VM ON-27W / 22:00-14W / 06:00-27W
VMA10FA0-0004	27	3682	3682	4629					19	2554	2554	3211	VM ON-27W / 22:00-19W / 06:00-27W
VMA10FA0-0005	21	2833	2833	3561					11	1479	1479	1859	VM ON-21W / 22:00-11W / 06:00-21W
VMA10FA0-0006	21	2833	2833	3561					14	1931	1931	2428	VM ON-21W / 22:00-14W / 06:00-21W
VMA10FA0-0007	41	5220	5220	6562					21	2833	2833	3561	VM ON-41W / 00:00-21W / 06:00-41W
VMA10FA0-0008	41	5220	5220	6562					27	3682	3682	4629	VM ON-41W / 00:00-27W / 06:00-41W
VMA10FA0-0009	27	3682	3682	4629					14	1931	1931	2428	VM ON-27W / 00:00-14W / 06:00-27W
VMA10FA0-0010	27	3682	3682	4629					19	2554	2554	3211	VM ON-27W / 00:00-19W / 06:00-27W
VMA10FA0-0011	21	2833	2833	3561					11	1479	1479	1859	VM ON-21W / 00:00-11W / 06:00-21W
VMA10FA0-0012	21	2833	2833	3561					14	1931	1931	2428	VM ON-21W / 00:00-14W / 06:00-21W



## Control options - Variant S - N(Optics 075 - 100 - 125)

VM - VIRTUAL MIDNIGHT(Lumen package 4L - 2L)													
Setting Code	W Max	Nominal flux (lm)			W Med	Nominal flux (lm)			W Min	Nominal flux (lm)			Description
		2700K	3000K	4000K		2700K	3000K	4000K		2700K	3000K	4000K	
<b>LUMEN PACKAGE 4L</b>													
VMA10DA0-0013	28	3429	3883	4311	19	2419	2739	3041	14	1861	2107	2340	VM ON-28W / 21:00-19W / 24:00-14W / 04:00-19W/06:00-28W
VMA10DA0-0014	19	2419	2739	3041	13	1678	1900	2110	10	1269	1437	1595	VM ON-19W / 21:00-13W / 24:00-10W / 04:00-13W/06:00-19W
VMA10DA0-0015	14	1861	2107	2340	10	1269	1437	1595	8	972	1100	1221	VM ON-14 / 21:00-10W / 24:00-8W / 04:00-10W/06:00-14W
VMA10DA0-0001	28	3429	3883	4311					14	1861	2107	2340	VM ON-28W / 22:00-14W / 06:00-28W
VMA10DA0-0002	28	3429	3883	4311					19	2419	2739	3041	VM ON-28W / 22:00-19W / 06:00-28W
VMA10DA0-0003	19	2419	2739	3041					10	1269	1437	1595	VM ON-19W / 22:00-10W / 06:00-19W
VMA10DA0-0004	19	2419	2739	3041					13	1678	1900	2110	VM ON-19W / 22:00-13W / 06:00-19W
VMA10DA0-0005	14	1861	2107	2340					8	972	1100	1221	VM ON-14W / 22:00-8W / 06:00-14W
VMA10DA0-0006	14	1861	2107	2340					10	1269	1437	1595	VM ON-14W / 22:00-10W / 06:00-14W
VMA10DA0-0007	28	3429	3883	4311					14	1861	2107	2340	VM ON-28W / 00:00-14W / 06:00-28W
VMA10DA0-0008	28	3429	3883	4311					19	2419	2739	3041	VM ON-28W / 00:00-19W / 06:00-28W
VMA10DA0-0009	19	2419	2739	3041					10	1269	1437	1595	VM ON-19W / 00:00-10W / 06:00-19W
VMA10DA0-0010	19	2419	2739	3041					13	1678	1900	2110	VM ON-19W / 00:00-13W / 06:00-19W
VMA10DA0-0011	14	1861	2107	2340					8	972	1100	1221	VM ON-14W / 00:00-8W / 06:00-14W
VMA10DA0-0012	14	1861	2107	2340					10	1269	1437	1595	VM ON-14W / 00:00-10W / 06:00-14W
<b>LUMEN PACKAGE 2L</b>													
VMA10BA0-0013	15	1694	1918	2130	10	1195	1353	1502	8	919	1041	1156	VM ON-15W / 21:00-10W / 24:00-8W / 04:00-10W/06:00-15W
VMA10BA0-0014	10	1195	1353	1502	7	829	939	1042	5	627	710	788	VM ON-10W / 21:00-7W / 24:00-5W / 04:00-7W /06:00-10W
VMA10BA0-0015	8	919	1041	1156	5	627	710	788	4	480	543	603	VM ON-8W / 21:00-5W / 24:00-4W / 04:00-5W /06:00-8W
VMA10BA0-0001	15	1694	1918	2130					8	919	1041	1156	VM ON-15W / 22:00-8W / 06:00-15W
VMA10BA0-0002	15	1694	1918	2130					10	1195	1353	1502	VM ON-15W / 22:00-10W / 06:00-15W
VMA10BA0-0003	10	1195	1353	1502					5	627	710	788	VM ON-10W / 22:00-5W / 06:00-10W
VMA10BA0-0004	10	1195	1353	1502					7	829	939	1042	VM ON-10W / 22:00-7W / 06:00-10W
VMA10BA0-0005	8	919	1041	1156					4	480	543	603	VM ON-8W / 22:00-4W / 06:00-7W
VMA10BA0-0006	8	919	1041	1156					5	627	710	788	VM ON-8W / 22:00-5W / 06:00-7W
VMA10BA0-0007	15	1694	1918	2130					8	919	1041	1156	VM ON-15W / 00:00-8W / 06:00-15W
VMA10BA0-0008	15	1694	1918	2130					10	1195	1353	1502	VM ON-15W / 00:00-10W / 06:00-15W
VMA10BA0-0009	10	1195	1353	1502					5	627	710	788	VM ON-10W / 00:00-5W / 06:00-10W
VMA10BA0-0010	10	1195	1353	1502					7	829	939	1042	VM ON-10W / 00:00-7W / 06:00-10W
VMA10BA0-0011	8	919	1041	1156					4	480	543	603	VM ON-8W / 00:00-4W / 06:00-7W
VMA10BA0-0012	8	919	1041	1156					5	627	710	788	VM ON-8W / 00:00-5W / 06:00-7W

G - LINESWITCH										
Setting Code	System Watts W (High Mode)	Nominal flux (lm)			System Watts W (Low Mode)	Nominal flux (lm)			Description	
		2700K	3000K	4000K		2700K	3000K	4000K		
<b>LUMEN PACKAGE 8L</b>										
LWE10HA0-0001	54	6872	7782	8640	27	3729	4223	4689	LINESWITCH (100%/50%) - 54W/27W	
LWE10HA0-0002	36	4847	5489	6094	19	2543	2879	3197	LINESWITCH (100%/50%) - 36W/19W	
LWE10HA0-0003	27	3729	4223	4689	15	1947	2205	2448	LINESWITCH (100%/50%) - 27W/15W	
<b>LUMEN PACKAGE 6L</b>										
LWE10FA0-0001	41	5220	5220	6562	21	2833	2833	3561	LINESWITCH (100%/50%) - 41W/21W	
LWE10FA0-0002	27	3682	3682	4629	14	1931	1931	2428	LINESWITCH (100%/50%) - 27W/14W	
LWE10FA0-0003	21	2833	2833	3561	11	1479	1479	1859	LINESWITCH (100%/50%) - 21W/11W	
<b>LUMEN PACKAGE 4L</b>										
LWE10DA0-0001	28	3429	3883	4311	14	1861	2107	2340	LINESWITCH (100%/50%) - 28W/14W	
LWE10DA0-0002	19	2419	2739	3041	10	1269	1437	1595	LINESWITCH (100%/50%) - 19W/10W	
LWE10DA0-0003	14	1861	2107	2340	8	972	1100	1221	LINESWITCH (100%/50%) - 14W/8W	
<b>LUMEN PACKAGE 2L</b>										
LWLE10BA0-0001	15	1694	1918	2130	8	919	1041	1156	LINESWITCH (100%/50%) - 15W/8W	
LWLE10BA0-0002	10	1195	1353	1502	5	627	710	788	LINESWITCH (100%/50%) - 10W/5W	
LWLE10BA0-0003	8	919	1041	1156	4	480	543	603	LINESWITCH (100%/50%) - 8W/4W	



## Control options - Variant S - N(Optics 075 - 100 - 125)

DL (DALI DIMMABLE)						
Lumen Package	Setting Code	System Watts W	Nominal flux (lm)			Description
			2700K	3000K	4000K	
8L	DLE10HA0-0001	54	6872	7782	8640	DALI MAX 54W
6L	DLE10FA0-0001	41	5220	5220	6562	DALI MAX 41W
4L	DLE10DA0-0001	28	3429	3883	4311	DALI MAX 28W
2L	DLE10BA0-0001	15	1694	1918	2130	DALI MAX 15W

FR - FLUX REGULATOR									
Setting Code	System Watts W (High Mode)	Nominal flux (lm)			System Watts W (Low Mode)	Nominal flux (lm)			Description
		2700K	3000K	4000K		2700K	3000K	4000K	
<b>LUMEN PACKAGE 8L</b>									
RFA10HA0-0001	54	6872	7782	8640	36	4847	5489	6094	REG. FLUSSO 54W@230V / 36W@170V
RFA10HA0-0002	54	6872	7782	8640	27	3729	4223	4689	REG. FLUSSO 54W@230V / 27W@170V
RFA10HA0-0003	36	4847	5489	6094	24	3363	3808	4228	REG. FLUSSO 36W@230V / 24W@170V
RFA10HA0-0004	36	4847	5489	6094	19	2543	2879	3197	REG. FLUSSO 36W@230V / 19W@170V
RFA10HA0-0005	27	3729	4223	4689	19	2543	2879	3197	REG. FLUSSO 27W@230V / 19W@170V
RFA10HA0-0006	27	3729	4223	4689	15	1947	2205	2448	REG. FLUSSO 27W@230V / 15W@170V
<b>LUMEN PACKAGE 6L</b>									
RFA10FA0-0001	41	5220	5220	6562	27	3682	3682	4629	REG. FLUSSO 41W@230V / 27W@170V
RFA10FA0-0002	41	5220	5220	6562	21	2833	2833	3561	REG. FLUSSO 41W@230V / 21W@170V
RFA10FA0-0003	27	3682	3682	4629	19	2554	2554	3211	REG. FLUSSO 27W@230V / 19W@170V
RFA10FA0-0004	27	3682	3682	4629	14	1931	1931	2428	REG. FLUSSO 27W@230V / 14W@170V
RFA10FA0-0005	21	2833	2833	3561	14	1931	1931	2428	REG. FLUSSO 21W@230V / 14W@170V
RFA10FA0-0006	21	2833	2833	3561	11	1479	1479	1859	REG. FLUSSO 21W@230V / 11W@170V
<b>LUMEN PACKAGE 4L</b>									
RFA10DA0-0001	28	3429	3883	4311	19	2419	2739	3041	REG. FLUSSO 28W@230V / 19W@170V
RFA10DA0-0002	28	3429	3883	4311	14	1861	2107	2340	REG. FLUSSO 28W@230V / 14W@170V
RFA10DA0-0003	19	2419	2739	3041	13	1678	1900	2110	REG. FLUSSO 19W@230V / 13W@170V
RFA10DA0-0004	19	2419	2739	3041	10	1269	1437	1595	REG. FLUSSO 19W@230V / 10W@170V
RFA10DA0-0005	14	1861	2107	2340	10	1269	1437	1595	REG. FLUSSO 14W@230V / 10W@170V
RFA10DA0-0006	14	1861	2107	2340	8	972	1100	1221	REG. FLUSSO 14W@230V / 8W@170V
<b>LUMEN PACKAGE 2L</b>									
RFA10BA0-0001	15	1694	1918	2130	10	1195	1353	1502	REG. FLUSSO 15W@230V / 10W@170V
RFA10BA0-0002	15	1694	1918	2130	8	919	1041	1156	REG. FLUSSO 15W@230V / 8W@170V
RFA10BA0-0003	10	1195	1353	1502	7	829	939	1042	REG. FLUSSO 10W@230V / 7W@170V
RFA10BA0-0004	10	1195	1353	1502	5	627	710	788	REG. FLUSSO 10W@230V / 5W@170V
RFA10BA0-0005	8	919	1041	1156	5	627	710	788	REG. FLUSSO 8W@230V / 5W@170V
RFA10BA0-0006	8	919	1041	1156	4	480	543	603	REG. FLUSSO 8W@230V / 4W@170V

CL*	
Setting Code	Description
CL###-****	CLO 50.000 HOURS START AT 90%
CL###-****	CLO 100.000 HOURS START AT 80%

\*Standard CLO to be matched to programme powers for FX option for S-N variants, please for information contact Cree Lighting Europe.

VMC*	
Setting Code	Description
VMC###-****	CLO 50.000 HOURS START AT 90%
VMC###-****	CLO 100.000 HOURS START AT 80%

\*Standard CLO to be matched to the wattage of the VM option programmes for S-N variants, please for information contact Cree Lighting Europe.



## Control options - Variant Z (Optics 075 - 100 - 125)

FX - FIXED OUTPUT					
Setting Code	System Watts W	Nominal flux (lm)			Description
		2700K	3000K	4000K	
<b>LUMEN PACKAGE 8L</b>					
FXP10HA0-0001	54	6872	7782	8640	FIXED OUTPUT 54W
FXP10HA0-0002	36	4847	5489	6094	FIXED OUTPUT 36W
FXP10HA0-0003	27	3729	4223	4689	FIXED OUTPUT 27W
<b>LUMEN PACKAGE 6L</b>					
FXP10FA0-0001	41	5220	5220	6562	FIXED OUTPUT 41W
FXP10FA0-0002	27	3682	3682	4629	FIXED OUTPUT 27W
FXP10FA0-0003	21	2833	2833	3561	FIXED OUTPUT 21W
<b>LUMEN PACKAGE 4L</b>					
FXP10DA0-0001	28	3429	3883	4311	FIXED OUTPUT 28W
FXP10DA0-0002	19	2419	2739	3041	FIXED OUTPUT 19W
FXP10DA0-0003	14	1861	2107	2340	FIXED OUTPUT 14W
<b>LUMEN PACKAGE 2L</b>					
FXP102B0-0001	15	1694	1918	2130	FIXED OUTPUT 15W
FXP102B0-0002	10	1195	1353	1502	FIXED OUTPUT 10W
FXP102B0-0003	8	919	1041	1156	FIXED OUTPUT 8W

VM - VIRTUAL MIDNIGHT (Lumen package 8L - 6L)													
Setting Code	W Max	Nominal flux (lm)			W Med	Nominal flux (lm)			W Min	Nominal flux (lm)			Description
		2700K	3000K	4000K		2700K	3000K	4000K		2700K	3000K	4000K	
<b>LUMEN PACKAGE 8L</b>													
VMP10HA0-0013	54	6872	7782	8640	36	4847	5178	6094	27	3729	4223	4689	VM ON-54W / 21:00-36W / 24:00-27W / 04:00-36W/06:00-54W
VMP10HA0-0014	36	4847	5489	6094	24	3363	3592	4228	19	2543	2879	3197	VM ON-36W / 21:00-24W / 24:00-19W / 04:00-24W/06:00- 36W
VMP10HA0-0015	27	3729	4223	4689	19	2543	2716	3197	15	1947	2205	2448	VM ON-27W / 21:00-19W / 24:00-15W / 04:00-19W/06:00-27W
VMP10HA0-0001	54	6872	7782	8640					27	3729	4223	4689	VM ON-54W / 22:00-27W / 06:00-54W
VMP10HA0-0002	54	6872	7782	8640					36	4847	5489	6094	VM ON-54W / 22:00-36W / 06:00-54W
VMP10HA0-0003	36	4847	5489	6094					19	2543	2879	3197	VM ON-36W / 22:00-19W / 06:00-36W
VMP10HA0-0004	36	4847	5489	6094					24	3363	3808	4228	VM ON-36W / 22:00-24W / 06:00-36W
VMP10HA0-0005	27	3729	4223	4689					15	1947	2205	2448	VM ON-27W / 22:00-15W / 06:00-27W
VMP10HA0-0006	27	3729	4223	4689					19	2543	2879	3197	VM ON-27W / 22:00-19W / 06:00-27W
VMP10HA0-0007	54	6872	7782	8640					27	3729	4223	4689	VM ON-54W / 00:00-27W / 06:00-54W
VMP10HA0-0008	54	6872	7782	8640					36	4847	5489	6094	VM ON-54W / 00:00-36W / 06:00-54W
VMP10HA0-0009	36	4847	5489	6094					19	2543	2879	3197	VM ON-36W / 00:00-19W / 06:00-36W
VMP10HA0-0010	36	4847	5489	6094					24	3363	3808	4228	VM ON-36W / 00:00-24W / 06:00-36W
VMP10HA0-0011	27	3729	4223	4689					15	1947	2205	2448	VM ON-27W / 00:00-15W / 06:00-27W
VMP10HA0-0012	27	3729	4223	4689					19	2543	2879	3197	VM ON-27W / 00:00-19W / 06:00-27W
<b>LUMEN PACKAGE 6L</b>													
VMP10FA0-0013	41	5220	5220	6562					21	2833	2833	3561	VM ON-41W / 21:00-27W / 24:00-21W / 04:00-27W/06:00- 41W
VMP10FA0-0014	27	3682	3682	4629	27	3682	3933	4629	14	1931	1931	2428	VM ON-27W / 21:00-19W / 24:00-14W / 04:00-19W/06:00-27W
VMP10FA0-0015	21	2833	2833	3561	19	2554	2728	3211	11	1479	1479	1859	VM ON-21W / 21:00-14W / 24:00-11W / 04:00-14W/06:00-21W
VMP10FA0-0001	41	5220	5220	6562	14	1931	2063	2428	21	2833	2833	3561	VM ON-41W / 22:00-21W / 06:00-41W
VMP10FA0-0002	41	5220	5220	6562					27	3682	3682	4629	VM ON-41W / 22:00-27W / 06:00-41W
VMP10FA0-0003	27	3682	3682	4629					14	1931	1931	2428	VM ON-27W / 22:00-14W / 06:00-27W
VMP10FA0-0004	27	3682	3682	4629					19	2554	2554	3211	VM ON-27W / 22:00-19W / 06:00-27W
VMP10FA0-0005	21	2833	2833	3561					11	1479	1479	1859	VM ON-21W / 22:00-11W / 06:00-21W
VMP10FA0-0006	21	2833	2833	3561					14	1931	1931	2428	VM ON-21W / 22:00-14W / 06:00-21W
VMP10FA0-0007	41	5220	5220	6562					21	2833	2833	3561	VM ON-41W / 00:00-21W / 06:00-41W
VMP10FA0-0008	41	5220	5220	6562					27	3682	3682	4629	VM ON-41W / 00:00-27W / 06:00-41W
VMP10FA0-0009	27	3682	3682	4629					14	1931	1931	2428	VM ON-27W / 00:00-14W / 06:00-27W
VMP10FA0-0010	27	3682	3682	4629					19	2554	2554	3211	VM ON-27W / 00:00-19W / 06:00-27W
VMP10FA0-0011	21	2833	2833	3561					11	1479	1479	1859	VM ON-21W / 00:00-11W / 06:00-21W
VMP10FA0-0012	21	2833	2833	3561					14	1931	1931	2428	VM ON-21W / 00:00-14W / 06:00-21W



**Control options - Variant Z (Optics 075 - 100 - 125)**

VM - VIRTUAL MIDNIGHT (Lumen package 4L - 2L)													
Setting Code	W Max	Nominal flux (lm)			W Med	Nominal flux (lm)			W Min	Nominal flux (lm)			Description
		2700K	3000K	4000K		2700K	3000K	4000K		2700K	3000K	4000K	
<b>LUMEN PACKAGE 4L</b>													
VMP10DA0-0013	28	3429	3883	4311	19	2419	2739	3041	14	1861	2107	2340	VM ON-28W / 21:00-19W / 24:00-14W / 04:00-19W/06:00-28W
VMP10DA0-0014	19	2419	2739	3041	13	1678	1900	2110	10	1269	1437	1595	VM ON-19W / 21:00-13W / 24:00-10W / 04:00-13W/06:00-19W
VMP10DA0-0015	14	1861	2107	2340	10	1269	1437	1595	8	972	1100	1221	VM ON-14 / 21:00-10W / 24:00-8W / 04:00-10W/06:00-14W
VMP10DA0-0001	28	3429	3883	4311					14	1861	2107	2340	VM ON-28W / 22:00-14W / 06:00-28W
VMP10DA0-0002	28	3429	3883	4311					19	2419	2739	3041	VM ON-28W / 22:00-19W / 06:00-28W
VMP10DA0-0003	19	2419	2739	3041					10	1269	1437	1595	VM ON-19W / 22:00-10W / 06:00-19W
VMP10DA0-0004	19	2419	2739	3041					13	1678	1900	2110	VM ON-19W / 22:00-13W / 06:00-19W
VMP10DA0-0005	14	1861	2107	2340					8	972	1100	1221	VM ON-14W / 22:00-8W / 06:00-14W
VMP10DA0-0006	14	1861	2107	2340					10	1269	1437	1595	VM ON-14W / 22:00-10W / 06:00-14W
VMP10DA0-0007	28	3429	3883	4311					14	1861	2107	2340	VM ON-28W / 00:00-14W / 06:00-28W
VMP10DA0-0008	28	3429	3883	4311					19	2419	2739	3041	VM ON-28W / 00:00-19W / 06:00-28W
VMP10DA0-0009	19	2419	2739	3041					10	1269	1437	1595	VM ON-19W / 00:00-10W / 06:00-19W
VMP10DA0-0010	19	2419	2739	3041					13	1678	1900	2110	VM ON-19W / 00:00-13W / 06:00-19W
VMP10DA0-0011	14	1861	2107	2340					8	972	1100	1221	VM ON-14W / 00:00-8W / 06:00-14W
VMP10DA0-0012	14	1861	2107	2340					10	1269	1437	1595	VM ON-14W / 00:00-10W / 06:00-14W
<b>LUMEN PACKAGE 2L</b>													
VMP10BA0-0013	15	1694	1918	2130	10	1195	1353	1502	8	919	1041	1156	VM ON-15W / 21:00-10W / 24:00-8W / 04:00-10W/06:00-15W
VMP10BA0-0014	10	1195	1353	1502	7	829	939	1042	5	627	710	788	VM ON-10W / 21:00-7W / 24:00-5W / 04:00-7W /06:00-10W
VMP10BA0-0015	8	919	1041	1156	5	627	710	788	4	480	543	603	VM ON-8W / 21:00-5W / 24:00-4W / 04:00-5W /06:00-8W
VMP10BA0-0001	15	1694	1918	2130					8	919	1041	1156	VM ON-15W / 22:00-8W / 06:00-15W
VMP10BA0-0002	15	1694	1918	2130					10	1195	1353	1502	VM ON-15W / 22:00-10W / 06:00-15W
VMP10BA0-0003	10	1195	1353	1502					5	627	710	788	VM ON-10W / 22:00-5W / 06:00-10W
VMP10BA0-0004	10	1195	1353	1502					7	829	939	1042	VM ON-10W / 22:00-7W / 06:00-10W
VMP10BA0-0005	8	919	1041	1156					4	480	543	603	VM ON-8W / 22:00-4W / 06:00-7W
VMP10BA0-0006	8	919	1041	1156					5	627	710	788	VM ON-8W / 22:00-5W / 06:00-7W
VMP10BA0-0007	15	1694	1918	2130					8	919	1041	1156	VM ON-15W / 00:00-8W / 06:00-15W
VMP10BA0-0008	15	1694	1918	2130					10	1195	1353	1502	VM ON-15W / 00:00-10W / 06:00-15W
VMP10BA0-0009	10	1195	1353	1502					5	627	710	788	VM ON-10W / 00:00-5W / 06:00-10W
VMP10BA0-0010	10	1195	1353	1502					7	829	939	1042	VM ON-10W / 00:00-7W / 06:00-10W
VMP10BA0-0011	8	919	1041	1156					4	480	543	603	VM ON-8W / 00:00-4W / 06:00-7W
VMP10BA0-0012	8	919	1041	1156					5	627	710	788	VM ON-8W / 00:00-5W / 06:00-7W

CL*	
Setting Code	Description
CL###-****	CLO 50.000 HOURS START AT 90%
CL###-****	CLO 100.000 HOURS START AT 80%

\*Standard CLO to be matched to programme powers for FX option for S-N variants, please for information contact Cree Lighting Europe.

VMC*	
Setting Code	Description
VMC###-****	CLO 50.000 HOURS START AT 90%
VMC###-****	CLO 100.000 HOURS START AT 80%

\*Standard CLO to be matched to the wattage of the VM option programmes for S-N variants, please for information contact Cree Lighting Europe.





## Control options - Variant Z (Optics SCP)

FX - FIXED OUTPUT					
Setting Code	System Watts W	Nominal flux (lm)			Description
		2700K	3000K	4000K	
<b>LUMEN PACKAGE 8L</b>					
FXA10HA0-00001	54	7186	7341	8640	FIXED OUTPUT 54W
FXA10HA0-00002	36	5068	5178	6094	FIXED OUTPUT 36W
FXA10HA0-00003	27	3899	3984	4689	FIXED OUTPUT 27W
<b>LUMEN PACKAGE 6L</b>					
FXA10FA0-00001	41	5458	5576	6562	FIXED OUTPUT 41W
FXA10FA0-00002	27	3850	3933	4629	FIXED OUTPUT 27W
FXA10FA0-00003	21	2962	3026	3561	FIXED OUTPUT 21W
<b>LUMEN PACKAGE 4L</b>					
FXA10DA0-00001	28	3585	3663	4311	FIXED OUTPUT 28W
FXA10DA0-00002	19	2529	2583	3041	FIXED OUTPUT 19W
FXA10DA0-00003	14	1946	1988	2340	FIXED OUTPUT 14W
<b>LUMEN PACKAGE 2L</b>					
FXA10BA0-00001	15	1771	1809	2130	FIXED OUTPUT 15W
FXA10BA0-00002	10	1249	1276	1502	FIXED OUTPUT 10W
FXA10BA0-00003	8	961	982	1156	FIXED OUTPUT 8W

VM - VIRTUAL MIDNIGHT (Lumen package 8L - 6L)													
Setting Code	W Max	Nominal flux (lm)			W Med	Nominal flux (lm)			W Min	Nominal flux (lm)			Description
		2700K	3000K	4000K		2700K	3000K	4000K		2700K	3000K	4000K	
<b>LUMEN PACKAGE 8L</b>													
VMA10HA0-0013	54	7186	7341	8640	36	5068	5178	6094	27	3899	3984	4689	VM ON-54W / 21:00-36W / 24:00-27W / 04:00-36W/06:00-54W
VMA10HA0-0014	36	5068	5178	6094	24	3516	3592	4228	19	2659	2716	3197	VM ON-36W / 21:00-24W / 24:00-19W /04:00-24W/06:00- 36W
VMA10HA0-0015	27	3899	3984	4689	19	2659	2716	3197	15	2036	2080	2448	VM ON-27W / 21:00-19W / 24:00-15W / 04:00-19W/06:00-27W
VMA10HA0-0001	54	7186	7341	8640					27	3899	3984	4689	VM ON-54W / 22:00-27W / 06:00-54W
VMA10HA0-0002	54	7186	7341	8640					36	5068	5178	6094	VM ON-54W / 22:00-36W / 06:00-54W
VMA10HA0-0003	36	5068	5178	6094					19	2659	2716	3197	VM ON-36W / 22:00-19W / 06:00-36W
VMA10HA0-0004	36	5068	5178	6094					24	3516	3592	4228	VM ON-36W / 22:00-24W / 06:00-36W
VMA10HA0-0005	27	3899	3984	4689					15	2036	2080	2448	VM ON-27W / 22:00-15W / 06:00-27W
VMA10HA0-0006	27	3899	3984	4689					19	2659	2716	3197	VM ON-27W / 22:00-19W / 06:00-27W
VMA10HA0-0007	54	7186	7341	8640					27	3899	3984	4689	VM ON-54W / 00:00-27W / 06:00-54W
VMA10HA0-0008	54	7186	7341	8640					36	5068	5178	6094	VM ON-54W / 00:00-36W / 06:00-54W
VMA10HA0-0009	36	5068	5178	6094					19	2659	2716	3197	VM ON-36W / 00:00-19W / 06:00-36W
VMA10HA0-0010	36	5068	5178	6094					24	3516	3592	4228	VM ON-36W / 00:00-24W / 06:00-36W
VMA10HA0-0011	27	3899	3984	4689					15	2036	2080	2448	VM ON-27W / 00:00-15W / 06:00-27W
VMA10HA0-0012	27	3899	3984	4689					19	2659	2716	3197	VM ON-27W / 00:00-19W / 06:00-27W
<b>LUMEN PACKAGE 6L</b>													
VMA10FA0-0013	41	5458	5576	6562					21	2962	3026	3561	VM ON-41W / 21:00-27W / 24:00-21W /04:00-27W/06:00- 41W
VMA10FA0-0014	27	3850	3933	4629	27	3850	3933	4629	14	2019	2063	2428	VM ON-27W / 21:00-19W / 24:00-14W /04:00-19W/06:00-27W
VMA10FA0-0015	21	2962	3026	3561	19	2671	2728	3211	11	1546	1580	1859	VM ON-21W / 21:00-14W / 24:00-11W /04:00-14W/06:00-21W
VMA10FA0-0001	41	5458	5576	6562	14	2019	2063	2428	21	2962	3026	3561	VM ON-41W / 22:00-21W / 06:00-41W
VMA10FA0-0002	41	5458	5576	6562					27	3850	3933	4629	VM ON-41W / 22:00-27W / 06:00-41W
VMA10FA0-0003	27	3850	3933	4629					14	2019	2063	2428	VM ON-27W / 22:00-14W / 06:00-27W
VMA10FA0-0004	27	3850	3933	4629					19	2671	2728	3211	VM ON-27W / 22:00-19W / 06:00-27W
VMA10FA0-0005	21	2962	3026	3561					11	1546	1580	1859	VM ON-21W / 22:00-11W / 06:00-21W
VMA10FA0-0006	21	2962	3026	3561					14	2019	2063	2428	VM ON-21W / 22:00-14W / 06:00-21W
VMA10FA0-0007	41	5458	5576	6562					21	2962	3026	3561	VM ON-41W / 00:00-21W / 06:00-41W
VMA10FA0-0008	41	5458	5576	6562					27	3850	3933	4629	VM ON-41W / 00:00-27W / 06:00-41W
VMA10FA0-0009	27	3850	3933	4629					14	2019	2063	2428	VM ON-27W / 00:00-14W / 06:00-27W
VMA10FA0-0010	27	3850	3933	4629					19	2671	2728	3211	VM ON-27W / 00:00-19W / 06:00-27W
VMA10FA0-0011	21	2962	3026	3561					11	1546	1580	1859	VM ON-21W / 00:00-11W / 06:00-21W
VMA10FA0-0012	21	2962	3026	3561					14	2019	2063	2428	VM ON-21W / 00:00-14W / 06:00-21W





## Control options - Variant Z (Optics SCP)

VM - VIRTUAL MIDNIGHT (Lumen package 4L - 2L)													
Setting Code	W Max	Nominal flux (lm)			W Med	Nominal flux (lm)			W Min	Nominal flux (lm)			Description
		2700K	3000K	4000K		2700K	3000K	4000K		2700K	3000K	4000K	
<b>LUMEN PACKAGE 4L</b>													
VMA10DA0-0013	28	3585	3663	4311	19	2529	2583	3041	14	1946	1988	2340	VM ON-28W / 21:00-19W / 24:00-14W / 04:00-19W/06:00-28W
VMA10DA0-0014	19	2529	2583	3041	13	1754	1792	2110	10	1327	1355	1595	VM ON-19W / 21:00-13W / 24:00-10W / 04:00-13W/06:00-19W
VMA10DA0-0015	14	1946	1988	2340	10	1327	1355	1595	8	1016	1038	1221	VM ON-14 / 21:00-10W / 24:00-8W / 04:00-10W/06:00-14W
VMA10DA0-0001	28	3585	3663	4311					14	1946	1988	2340	VM ON-28W / 22:00-14W / 06:00-28W
VMA10DA0-0002	28	3585	3663	4311					19	2529	2583	3041	VM ON-28W / 22:00-19W / 06:00-28W
VMA10DA0-0003	19	2529	2583	3041					10	1327	1355	1595	VM ON-19W / 22:00-10W / 06:00-19W
VMA10DA0-0004	19	2529	2583	3041					13	1754	1792	2110	VM ON-19W / 22:00-13W / 06:00-19W
VMA10DA0-0005	14	1946	1988	2340					8	1016	1038	1221	VM ON-14W / 22:00-8W / 06:00-14W
VMA10DA0-0006	14	1946	1988	2340					10	1327	1355	1595	VM ON-14W / 22:00-10W / 06:00-14W
VMA10DA0-0007	28	3585	3663	4311					14	1946	1988	2340	VM ON-28W / 00:00-14W / 06:00-28W
VMA10DA0-0008	28	3585	3663	4311					19	2529	2583	3041	VM ON-28W / 00:00-19W / 06:00-28W
VMA10DA0-0009	19	2529	2583	3041					10	1327	1355	1595	VM ON-19W / 00:00-10W / 06:00-19W
VMA10DA0-0010	19	2529	2583	3041					13	1754	1792	2110	VM ON-19W / 00:00-13W / 06:00-19W
VMA10DA0-0011	14	1946	1988	2340					8	1016	1038	1221	VM ON-14W / 00:00-8W / 06:00-14W
VMA10DA0-0012	14	1946	1988	2340					10	1327	1355	1595	VM ON-14W / 00:00-10W / 06:00-14W
<b>LUMEN PACKAGE 2L</b>													
VMA10BA0-0013	15	1771	1809	2130	10	1249	1276	1502	8	961	982	1156	VM ON-15W / 21:00-10W / 24:00-8W / 04:00-10W/06:00-15W
VMA10BA0-0014	10	1249	1276	1502	7	867	885	1042	5	655	669	788	VM ON-10W / 21:00-7W / 24:00-5W / 04:00-7W /06:00-10W
VMA10BA0-0015	8	961	982	1156	5	655	669	788	4	502	513	603	VM ON-8W / 21:00-5W / 24:00-4W / 04:00-5W /06:00-8W
VMA10BA0-0001	15	1771	1809	2130					8	961	982	1156	VM ON-15W / 22:00-8W / 06:00-15W
VMA10BA0-0002	15	1771	1809	2130					10	1249	1276	1502	VM ON-15W / 22:00-10W / 06:00-15W
VMA10BA0-0003	10	1249	1276	1502					5	655	669	788	VM ON-10W / 22:00-5W / 06:00-10W
VMA10BA0-0004	10	1249	1276	1502					7	867	885	1042	VM ON-10W / 22:00-7W / 06:00-10W
VMA10BA0-0005	8	961	982	1156					4	502	513	603	VM ON-8W / 22:00-4W / 06:00-7W
VMA10BA0-0006	8	961	982	1156					5	655	669	788	VM ON-8W / 22:00-5W / 06:00-7W
VMA10BA0-0007	15	1771	1809	2130					8	961	982	1156	VM ON-15W / 00:00-8W / 06:00-15W
VMA10BA0-0008	15	1771	1809	2130					10	1249	1276	1502	VM ON-15W / 00:00-10W / 06:00-15W
VMA10BA0-0009	10	1249	1276	1502					5	655	669	788	VM ON-10W / 00:00-5W / 06:00-10W
VMA10BA0-0010	10	1249	1276	1502					7	867	885	1042	VM ON-10W / 00:00-7W / 06:00-10W
VMA10BA0-0011	8	961	982	1156					4	502	513	603	VM ON-8W / 00:00-4W / 06:00-7W
VMA10BA0-0012	8	961	982	1156					5	655	669	788	VM ON-8W / 00:00-5W / 06:00-7W

G - LINESWITCH										
Setting Code	System Watts W (High Mode)	Nominal flux (lm)			System Watts W (Low Mode)	Nominal flux (lm)			Description	
		2700K	3000K	4000K		2700K	3000K	4000K		
<b>LUMEN PACKAGE 8L</b>										
LWE10HA0-0001	54	8640	7341	7186	27	3899	3984	4689	LINESWITCH (100%/50%) - 54W/27W	
LWE10HA0-0002	36	6094	5178	5068	19	2659	2716	3197	LINESWITCH (100%/50%) - 36W/19W	
LWE10HA0-0003	27	4689	3984	3899	15	2036	2080	2448	LINESWITCH (100%/50%) - 27W/15W	
<b>LUMEN PACKAGE 6L</b>										
LWE10FA0-0001	41	6562	5576	5458	21	2962	3026	3561	LINESWITCH (100%/50%) - 41W/21W	
LWE10FA0-0002	27	4629	3933	3850	14	2019	2063	2428	LINESWITCH (100%/50%) - 27W/14W	
LWE10FA0-0003	21	3561	3026	2962	11	1546	1580	1859	LINESWITCH (100%/50%) - 21W/11W	
<b>LUMEN PACKAGE 4L</b>										
LWE10DA0-0001	28	4311	3663	3585	14	1946	1988	2340	LINESWITCH (100%/50%) - 28W/14W	
LWE10DA0-0002	19	3041	2583	2529	10	1327	1355	1595	LINESWITCH (100%/50%) - 19W/10W	
LWE10DA0-0003	14	2340	1988	1946	8	1016	1038	1221	LINESWITCH (100%/50%) - 14W/8W	
<b>LUMEN PACKAGE 2L</b>										
LWLE10BA0-0001	15	2130	1809	1771	8	961	982	1156	LINESWITCH (100%/50%) - 15W/8W	
LWLE10BA0-0002	10	1502	1276	1249	5	655	669	788	LINESWITCH (100%/50%) - 10W/5W	
LWLE10BA0-0003	8	1156	982	961	4	502	513	603	LINESWITCH (100%/50%) - 8W/4W	



## Control options - Variant Z (Optics SCP)

DL - DALI DIMMABLE						
Lumen Package	System Watts W	Nominal flux (lm)	Description			Descrizione
			2700K	3000K	4000K	
8L	DLE10HA0-0001	54	7186	7341	8640	DALI MAX 54W
6L	DLE10FA0-0001	41	5458	5576	6562	DALI MAX 41W
4L	DLE10DA0-0001	28	3585	3663	4311	DALI MAX 28W
2L	DLE10BA0-0001	15	1771	1809	2130	DALI MAX 15W

FR - FLUX REGULATOR										
Setting Code	System Watts W (High Mode)	Nominal flux (lm)			System Watts W (Low Mode)	Nominal flux (lm)			Description	
		2700K	3000K	4000K		2700K	3000K	4000K		
<b>LUMEN PACKAGE 8L</b>										
RFA10HA0-0001	54	7186	7341	8640	36	5068	5178	6094	REG. FLUSSO 54W@230V / 36W@170V	
RFA10HA0-0002	54	7186	7341	8640	27	3899	3984	4689	REG. FLUSSO 54W@230V / 27W@170V	
RFA10HA0-0003	36	5068	5178	6094	24	3516	3592	4228	REG. FLUSSO 36W@230V / 24W@170V	
RFA10HA0-0004	36	5068	5178	6094	19	2659	2716	3197	REG. FLUSSO 36W@230V / 19W@170V	
RFA10HA0-0005	27	3899	3984	4689	19	2659	2716	3197	REG. FLUSSO 27W@230V / 19W@170V	
RFA10HA0-0006	27	3899	3984	4689	15	2036	2080	2448	REG. FLUSSO 27W@230V / 15W@170V	
<b>LUMEN PACKAGE 6L</b>										
RFA10FA0-0001	41	5458	5576	6562	27	3850	3933	4629	REG. FLUSSO 41W@230V / 27W@170V	
RFA10FA0-0002	41	5458	5576	6562	21	2962	3026	3561	REG. FLUSSO 41W@230V / 21W@170V	
RFA10FA0-0003	27	3850	3933	4629	19	2671	2728	3211	REG. FLUSSO 27W@230V / 19W@170V	
RFA10FA0-0004	27	3850	3933	4629	14	2019	2063	2428	REG. FLUSSO 27W@230V / 14W@170V	
RFA10FA0-0005	21	2962	3026	3561	14	2019	2063	2428	REG. FLUSSO 21W@230V / 14W@170V	
RFA10FA0-0006	21	2962	3026	3561	11	1546	1580	1859	REG. FLUSSO 21W@230V / 11W@170V	
<b>LUMEN PACKAGE 4L</b>										
RFA10DA0-0001	28	3585	3663	4311	19	2529	2583	3041	REG. FLUSSO 28W@230V / 19W@170V	
RFA10DA0-0002	28	3585	3663	4311	14	1946	1988	2340	REG. FLUSSO 28W@230V / 14W@170V	
RFA10DA0-0003	19	2529	2583	3041	13	1754	1792	2110	REG. FLUSSO 19W@230V / 13W@170V	
RFA10DA0-0004	19	2529	2583	3041	10	1327	1355	1595	REG. FLUSSO 19W@230V / 10W@170V	
RFA10DA0-0005	14	1946	1988	2340	10	1327	1355	1595	REG. FLUSSO 14W@230V / 10W@170V	
RFA10DA0-0006	14	1946	1988	2340	8	1016	1038	1221	REG. FLUSSO 14W@230V / 8W@170V	
<b>LUMEN PACKAGE 2L</b>										
RFA10BA0-0001	15	1771	1809	2130	10	1249	1276	1502	REG. FLUSSO 15W@230V / 10W@170V	
RFA10BA0-0002	15	1771	1809	2130	8	961	982	1156	REG. FLUSSO 15W@230V / 8W@170V	
RFA10BA0-0003	10	1249	1276	1502	7	867	885	1042	REG. FLUSSO 10W@230V / 7W@170V	
RFA10BA0-0004	10	1249	1276	1502	5	655	669	788	REG. FLUSSO 10W@230V / 5W@170V	
RFA10BA0-0005	8	961	982	1156	5	655	669	788	REG. FLUSSO 8W@230V / 5W@170V	
RFA10BA0-0006	8	961	982	1156	4	502	513	603	REG. FLUSSO 8W@230V / 4W@170V	

CL*	
Setting Code	Description
CL###-****	CLO 50.000 HOURS START AT 90%
CL###-****	CLO 100.000 HOURS START AT 80%

\*Standard CLO to be matched to programme powers for FX option for S-N variants, please for information contact Cree Lighting Europe.

VMC*	
Setting Code	Description
VMC###-****	CLO 50.000 HOURS START AT 90%
VMC###-****	CLO 100.000 HOURS START AT 80%

\*Standard CLO to be matched to the wattage of the VM option programmes for S-N variants, please for information contact Cree Lighting Europe.



## Control options - Variant Z (Optics SCP)

FX - FIXED OUTPUT					
Setting Code	Potenza di sistema W	Nominal flux (lm)			Description
		2700K	3000K	4000K	
<b>LUMEN PACKAGE 8L</b>					
FXP10HA0-0001	54	7186	7341	8640	FIXED OUTPUT 54W
FXP10HA0-0002	36	5068	5178	6094	FIXED OUTPUT 36W
FXP10HA0-0003	27	3899	3984	4689	FIXED OUTPUT 27W
<b>LUMEN PACKAGE 6L</b>					
FXP10FA0-0001	41	5458	5576	6562	FIXED OUTPUT 41W
FXP10FA0-0002	27	3850	3933	4629	FIXED OUTPUT 27W
FXP10FA0-0003	21	2962	3026	3561	FIXED OUTPUT 21W
<b>LUMEN PACKAGE 4L</b>					
FXP10DA0-0001	28	3585	3663	4311	FIXED OUTPUT 28W
FXP10DA0-0002	19	2529	2583	3041	FIXED OUTPUT 19W
FXP10DA0-0003	14	1946	1988	2340	FIXED OUTPUT 14W
<b>LUMEN PACKAGE 2L</b>					
FXP102B0-0001	15	1771	1809	2130	FIXED OUTPUT 15W
FXP102B0-0002	10	1249	1276	1502	FIXED OUTPUT 10W
FXP102B0-0003	8	961	982	1156	FIXED OUTPUT 8W

VM - VIRTUAL MIDNIGHT (Lumen package 8L - 6L)													
Setting Code	W Max	Nominal flux (lm)			W Med	Nominal flux (lm)			W Min	Nominal flux (lm)			Description
		2700K	3000K	4000K		2700K	3000K	4000K		2700K	3000K	4000K	
<b>LUMEN PACKAGE 8L</b>													
VMP10HA0-0013	54	7186	7341	8640	36	5068	5178	6094	27	3899	3984	4689	VM ON-54W / 21:00-36W / 24:00-27W / 04:00-36W/06:00-54W
VMP10HA0-0014	36	5068	5178	6094	24	3516	3592	4228	19	2659	2716	3197	VM ON-36W / 21:00-24W / 24:00-19W /04:00-24W/06:00- 36W
VMP10HA0-0015	27	3899	3984	4689	19	2659	2716	3197	15	2036	2080	2448	VM ON-27W / 21:00-19W / 24:00-15W / 04:00-19W/06:00-27W
VMP10HA0-0001	54	7186	7341	8640					27	3899	3984	4689	VM ON-54W / 22:00-27W / 06:00-54W
VMP10HA0-0002	54	7186	7341	8640					36	5068	5178	6094	VM ON-54W / 22:00-36W / 06:00-54W
VMP10HA0-0003	36	5068	5178	6094					19	2659	2716	3197	VM ON-36W / 22:00-19W / 06:00-36W
VMP10HA0-0004	36	5068	5178	6094					24	3516	3592	4228	VM ON-36W / 22:00-24W / 06:00-36W
VMP10HA0-0005	27	3899	3984	4689					15	2036	2080	2448	VM ON-27W / 22:00-15W / 06:00-27W
VMP10HA0-0006	27	3899	3984	4689					19	2659	2716	3197	VM ON-27W / 22:00-19W / 06:00-27W
VMP10HA0-0007	54	7186	7341	8640					27	3899	3984	4689	VM ON-54W / 00:00-27W / 06:00-54W
VMP10HA0-0008	54	7186	7341	8640					36	5068	5178	6094	VM ON-54W / 00:00-36W / 06:00-54W
VMP10HA0-0009	36	5068	5178	6094					19	2659	2716	3197	VM ON-36W / 00:00-19W / 06:00-36W
VMP10HA0-0010	36	5068	5178	6094					24	3516	3592	4228	VM ON-36W / 00:00-24W / 06:00-36W
VMP10HA0-0011	27	3899	3984	4689					15	2036	2080	2448	VM ON-27W / 00:00-15W / 06:00-27W
VMP10HA0-0012	27	3899	3984	4689					19	2659	2716	3197	VM ON-27W / 00:00-19W / 06:00-27W
<b>LUMEN PACKAGE 6L</b>													
VMP10FA0-0013	41	5458	5576	6562					21	2962	3026	3561	VM ON-41W / 21:00-27W / 24:00-21W /04:00-27W/06:00- 41W
VMP10FA0-0014	27	3850	3933	4629	27	3850	3933	4629	14	2019	2063	2428	VM ON-27W / 21:00-19W / 24:00-14W /04:00-19W/06:00-27W
VMP10FA0-0015	21	2962	3026	3561	19	2671	2728	3211	11	1546	1580	1859	VM ON-21W / 21:00-14W / 24:00-11W /04:00-14W/06:00-21W
VMP10FA0-0001	41	5458	5576	6562	14	2019	2063	2428	21	2962	3026	3561	VM ON-41W / 22:00-21W / 06:00-41W
VMP10FA0-0002	41	5458	5576	6562					27	3850	3933	4629	VM ON-41W / 22:00-27W / 06:00-41W
VMP10FA0-0003	27	3850	3933	4629					14	2019	2063	2428	VM ON-27W / 22:00-14W / 06:00-27W
VMP10FA0-0004	27	3850	3933	4629					19	2671	2728	3211	VM ON-27W / 22:00-19W / 06:00-27W
VMP10FA0-0005	21	2962	3026	3561					11	1546	1580	1859	VM ON-21W / 22:00-11W / 06:00-21W
VMP10FA0-0006	21	2962	3026	3561					14	2019	2063	2428	VM ON-21W / 22:00-14W / 06:00-21W
VMP10FA0-0007	41	5458	5576	6562					21	2962	3026	3561	VM ON-41W / 00:00-21W / 06:00-41W
VMP10FA0-0008	41	5458	5576	6562					27	3850	3933	4629	VM ON-41W / 00:00-27W / 06:00-41W
VMP10FA0-0009	27	3850	3933	4629					14	2019	2063	2428	VM ON-27W / 00:00-14W / 06:00-27W
VMP10FA0-0010	27	3850	3933	4629					19	2671	2728	3211	VM ON-27W / 00:00-19W / 06:00-27W
VMP10FA0-0011	21	2962	3026	3561					11	1546	1580	1859	VM ON-21W / 00:00-11W / 06:00-21W
VMP10FA0-0012	21	2962	3026	3561					14	2019	2063	2428	VM ON-21W / 00:00-14W / 06:00-21W



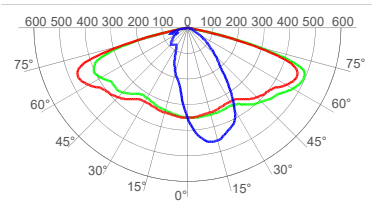
## Control options - Variant Z (Optics SCP)

VM - VIRTUAL MIDNIGHT (Lumen package 4L - 2L)													
Setting Code	W Max	Nominal flux (lm)			W Med	Nominal flux (lm)			W Min	Nominal flux (lm)			Description
		2700K	3000K	4000K		2700K	3000K	4000K		2700K	3000K	4000K	
<b>LUMEN PACKAGE 4L</b>													
VMP10DA0-0013	28	3585	3663	4311	19	2529	2583	3041	14	1946	1988	2340	VM ON-28W / 21:00-19W / 24:00-14W / 04:00-19W/06:00-28W
VMP10DA0-0014	19	2529	2583	3041	13	1754	1792	2110	10	1327	1355	1595	VM ON-19W / 21:00-13W / 24:00-10W / 04:00-13W/06:00-19W
VMP10DA0-0015	14	1946	1988	2340	10	1327	1355	1595	8	1016	1038	1221	VM ON-14 / 21:00-10W / 24:00-8W / 04:00-10W/06:00-14W
VMP10DA0-0001	28	3585	3663	4311					14	1946	1988	2340	VM ON-28W / 22:00-14W / 06:00-28W
VMP10DA0-0002	28	3585	3663	4311					19	2529	2583	3041	VM ON-28W / 22:00-19W / 06:00-28W
VMP10DA0-0003	19	2529	2583	3041					10	1327	1355	1595	VM ON-19W / 22:00-10W / 06:00-19W
VMP10DA0-0004	19	2529	2583	3041					13	1754	1792	2110	VM ON-19W / 22:00-13W / 06:00-19W
VMP10DA0-0005	14	1946	1988	2340					8	1016	1038	1221	VM ON-14W / 22:00-8W / 06:00-14W
VMP10DA0-0006	14	1946	1988	2340					10	1327	1355	1595	VM ON-14W / 22:00-10W / 06:00-14W
VMP10DA0-0007	28	3585	3663	4311					14	1946	1988	2340	VM ON-28W / 00:00-14W / 06:00-28W
VMP10DA0-0008	28	3585	3663	4311					19	2529	2583	3041	VM ON-28W / 00:00-19W / 06:00-28W
VMP10DA0-0009	19	2529	2583	3041					10	1327	1355	1595	VM ON-19W / 00:00-10W / 06:00-19W
VMP10DA0-0010	19	2529	2583	3041					13	1754	1792	2110	VM ON-19W / 00:00-13W / 06:00-19W
VMP10DA0-0011	14	1946	1988	2340					8	1016	1038	1221	VM ON-14W / 00:00-8W / 06:00-14W
VMP10DA0-0012	14	1946	1988	2340					10	1327	1355	1595	VM ON-14W / 00:00-10W / 06:00-14W
<b>LUMEN PACKAGE 2L</b>													
VMP10BA0-0013	15	1771	1809	2130	10	1249	1276	1502	8	961	982	1156	VM ON-15W / 21:00-10W / 24:00-8W / 04:00-10W/06:00-15W
VMP10BA0-0014	10	1249	1276	1502	7	867	885	1042	5	655	669	788	VM ON-10W / 21:00-7W / 24:00-5W / 04:00-7W /06:00-10W
VMP10BA0-0015	8	961	982	1156	5	655	669	788	4	502	513	603	VM ON-8W / 21:00-5W / 24:00-4W / 04:00-5W /06:00-8W
VMP10BA0-0001	15	1771	1809	2130					8	961	982	1156	VM ON-15W / 22:00-8W / 06:00-15W
VMP10BA0-0002	15	1771	1809	2130					10	1249	1276	1502	VM ON-15W / 22:00-10W / 06:00-15W
VMP10BA0-0003	10	1249	1276	1502					5	655	669	788	VM ON-10W / 22:00-5W / 06:00-10W
VMP10BA0-0004	10	1249	1276	1502					7	867	885	1042	VM ON-10W / 22:00-7W / 06:00-10W
VMP10BA0-0005	8	961	982	1156					4	502	513	603	VM ON-8W / 22:00-4W / 06:00-7W
VMP10BA0-0006	8	961	982	1156					5	655	669	788	VM ON-8W / 22:00-5W / 06:00-7W
VMP10BA0-0007	15	1771	1809	2130					8	961	982	1156	VM ON-15W / 00:00-8W / 06:00-15W
VMP10BA0-0008	15	1771	1809	2130					10	1249	1276	1502	VM ON-15W / 00:00-10W / 06:00-15W
VMP10BA0-0009	10	1249	1276	1502					5	655	669	788	VM ON-10W / 00:00-5W / 06:00-10W
VMP10BA0-0010	10	1249	1276	1502					7	867	885	1042	VM ON-10W / 00:00-7W / 06:00-10W
VMP10BA0-0011	8	961	982	1156					4	502	513	603	VM ON-8W / 00:00-4W / 06:00-7W
VMP10BA0-0012	8	961	982	1156					5	655	669	788	VM ON-8W / 00:00-5W / 06:00-7W

**Photometry**

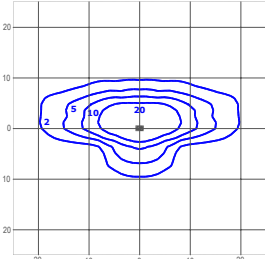
All published luminaire photometric testing performed by an external certified ISO 17025 laboratory. To obtain an IES file specific to your project consult: [www.creelighting-europe.com](http://www.creelighting-europe.com)

**075 - Type II Short**



cd/klm  
 C0 - C180 C90 - C270 C2.5 - C182.5

Test Report #: 1088-QL20-R18

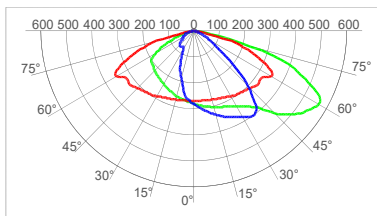


lux  
 TRSA-2-075-8L-407  
 Mounting Height: 6m

LUMEN OUTPUT - 075 (Type II Short)			
Lumen Package	2700K	3000K	4000K
	Initial Delivered Lumens*	Initial Delivered Lumens*	Initial Delivered Lumens*
2L	1450	1650	1850
4L	2950	3400	3750
6L	4550	5150	5700
8L	5950	6800	7516

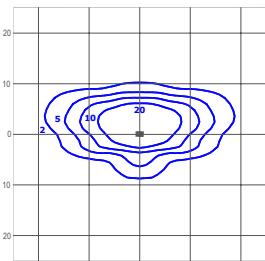
\* Initial delivered lumens at 25°C (77°F). Actual production yield may vary between -4 and +10% of initial delivered lumens

**100 - Type II Short**



cd/klm  
 C0 - C180 C90 - C270 C20 - C200

Test Report #: 1088-QL20-R12

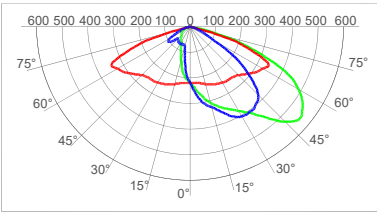


lux  
 TRSA-2-100-8L-407  
 Mounting Height: 6m

LUMEN OUTPUT - 100 (Type II Short)			
Lumen Package	2700K	3000K	4000K
	Initial Delivered Lumens*	Initial Delivered Lumens*	Initial Delivered Lumens*
2L	1400	1600	1800
4L	2900	3300	3650
6L	4400	5000	5550
8L	5820	6590	7317

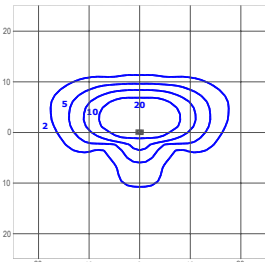
\* Initial delivered lumens at 25°C (77°F). Actual production yield may vary between -4 and +10% of initial delivered lumens

**125 - Type II Short**



cd/klm  
 C0 - C180 C90 - C270 C35 - C215

Test Report #: 1088-QL20-R19

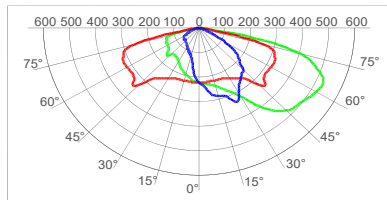


lux  
 TRSA-2-125-8L-407  
 Mounting Height: 6m

LUMEN OUTPUT - 125 (Type II Short)			
Lumen Package	2700K	3000K	4000K
	Initial Delivered Lumens*	Initial Delivered Lumens*	Initial Delivered Lumens*
2L	1450	1650	1850
4L	2950	3400	3750
6L	4550	5150	5700
8L	5950	6800	7475

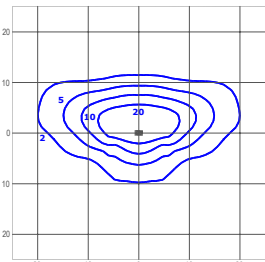
\* Initial delivered lumens at 25°C (77°F). Actual production yield may vary between -4 and +10% of initial delivered lumens

**SCP - Type II Short**



cd/klm  
 C0 - C180 C90 - C270 C20 - C200

Test Report #: 1088-QL20-R15



lux  
 TRSA-2-SCP-8L-407  
 Mounting Height: 6m

LUMEN OUTPUT - SCP (Type II Short)			
Lumen Package	2700K	3000K	4000K
	Initial Delivered Lumens*	Initial Delivered Lumens*	Initial Delivered Lumens*
2L	1450	1650	1850
4L	2950	3400	3750
6L	4550	5150	5700
8L	5950	6800	7475

\* Initial delivered lumens at 25°C (77°F). Actual production yield may vary between -4 and +10% of initial delivered lumens